

Bolt-Down Assembly & Installation Instructions (Companion II Series)



The JES Bolt-Down option assembly consists of a **pipe nipple** (1), **flat washer** (1), **external tooth washer** (1), and **nuts** (2). The hardware is supplied assembled to lamp base.

Tools needed: ½" drill bit & 11/16" wrench



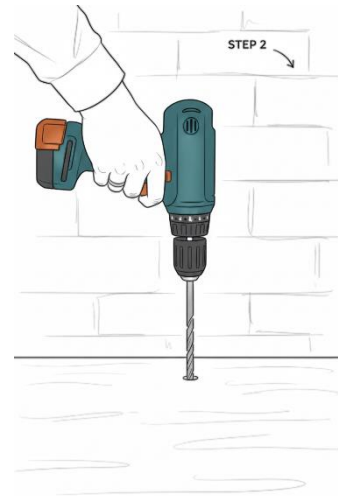
STEP 1

If mounting to bedside cabinet: **Remove drawer** and set aside



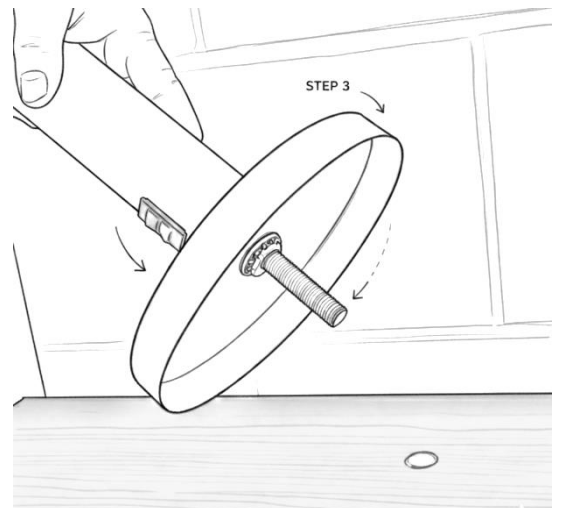
STEP 2

Drill ½" hole in table top in the location specified by owner



STEP 3

- **Remove nut** (1), **flat washer** (1), and **external tooth washer** (1) from the pipe nipple
- **Place lamp base and bolt-down pipe nipple** over hole and set in place



info@jeslighting.com

414-760-3377

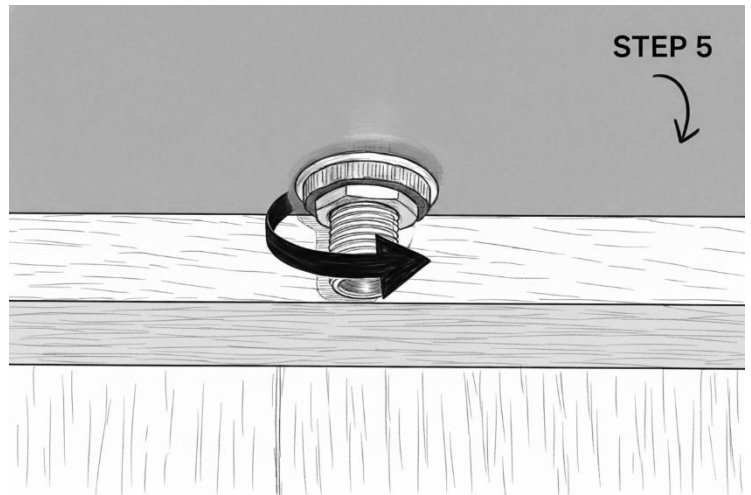
Bolt-Down Assembly & Installation Instructions (Companion II Series)

STEP 4

Attach
flat washer (1),
external tooth washer (1),
and nut (1)
to pipe nipple at underside of table top.
Lamp base should sit squarely on table top

STEP 5

Tighten with 11/16" wrench.



STEP 7

If necessary, replace drawer

Done

JES Bolt-Down assembly and installation complete



info@jeslighting.com

414-760-3377